

AMP KiwiSaver Scheme Preferred Partnership

AMP KiwiSaver Scheme for employers.

KiwiSaver is an easy way for your employees to save for their retirement and as their employer, you play an important role in their financial future and KiwiSaver journey.



A little help



A partner of choice for employers

With over 160 years experience helping New Zealanders, we aim to make KiwiSaver as simple as possible for businesses to manage.

We'll help you provide an easy to understand retirement savings solution that helps your people create their tomorrow.

Chosen by **2,800+** Businesses
as KiwiSaver Preferred Provider*

Highly skilled team of **+160** people
dedicated to our KiwiSaver proposition



*AMP & Adviser Partners

Making KiwiSaver simple for your business and your people

By selecting an employer-chosen KiwiSaver scheme for your business, you're helping to encourage your employees to work towards a better financial future.

Why should I choose the AMP KiwiSaver Scheme for my business and my people?

Better for you business

- Your business will have KiwiSaver administration support and assistance to help you manage your KiwiSaver obligations efficiently.
- By having an employer chosen KiwiSaver scheme you only have to deal with a single set of KiwiSaver scheme information and a dedicated single point of contact for all KiwiSaver queries.
- Nominating AMP as your employer chosen KiwiSaver scheme is simple and free.

Better for your people

- An employer chosen KiwiSaver scheme can help encourage your staff to make more proactive investment decisions
- Every AMP KiwiSaver Scheme member has access to a nationwide network of KiwiSaver experts ready to provide the financial help your people need wherever they may need us. Our services include a range of practical digital tools, personalised financial advice, education, and onsite seminars.
- We offer members the ability to mix and match a wide range of investment options from several of the country's leading investment managers.



All AMP-managed funds have been independently certified as responsible by the Responsible Investment Association Australasia (RIAA)¹ – the leading initiative for distinguishing quality responsible, ethical and impact investment products.

¹For more information, please see: www.responsibleinvestment.org

The AMP KiwiSaver scheme

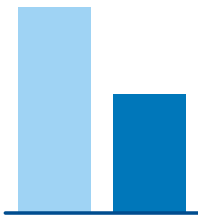
When you're investing your hard-earned money with AMP, you're investing in:



Various fund managers
to choose from

Flexibility and choice

With AMP you don't have to choose only one KiwiSaver fund. You can select up to seven funds from some of NZ's leading investment managers within your KiwiSaver account.



Good fees and performance

We use an index investing approach to deliver value and performance over the long-term. We replicate market performance by constructing a well-diversified portfolio and holding it over a long time period. By spreading risk broadly and minimising buying and selling we keep investment costs down and maximise value for our customers.



Sustainability

Our investment philosophy puts sustainable investing at its core.

Which is why we have partnered with the Responsible Investment Association Australasia (RIAA) to certify all AMP-managed funds as responsible across our AMP KiwiSaver Scheme. AMP has also been recognised as a Responsible Leader 2022 by RIAA¹. This acknowledges our commitment to responsible investing as an investment manager.



Making it easy

The MyAMP app and portal ensures you have full visibility over your KiwiSaver balance, fund performance and how your money is invested. You can download your annual statements, view your transaction history, change your fund mix or easily get in touch with us.

¹For more information, please see: www.responsibleinvestment.org

How do I select the AMP KiwiSaver Scheme as our employer-chosen KiwiSaver scheme?

1

An authorised signatory completes a nomination form and returns this via email or post. This form can be found **here** or on our website at **www.amp.co.nz/KiwisaverEmployerChosenForm**

2

We take care of having this registered with IRD. This can take up to 10 working days.

3

We'll then send you a covering letter that introduces the AMP KiwiSaver Scheme and a copy of the AMP KiwiSaver Scheme Product disclosure statement and Fund update booklet via email. The AMP KiwiSaver Scheme Product disclosure statement and Fund update booklet will need to be distributed to new or existing employees.

4

You and your people can begin "creating their tomorrow".

Submit your forms

Email:

kiwisaver@amp.co.nz

Post:

AMP KiwiSaver Scheme
Freepost 170
PO Box 55, Shortland Street
Auckland 1140

Introducing Lifesteps - a great choice for your employees

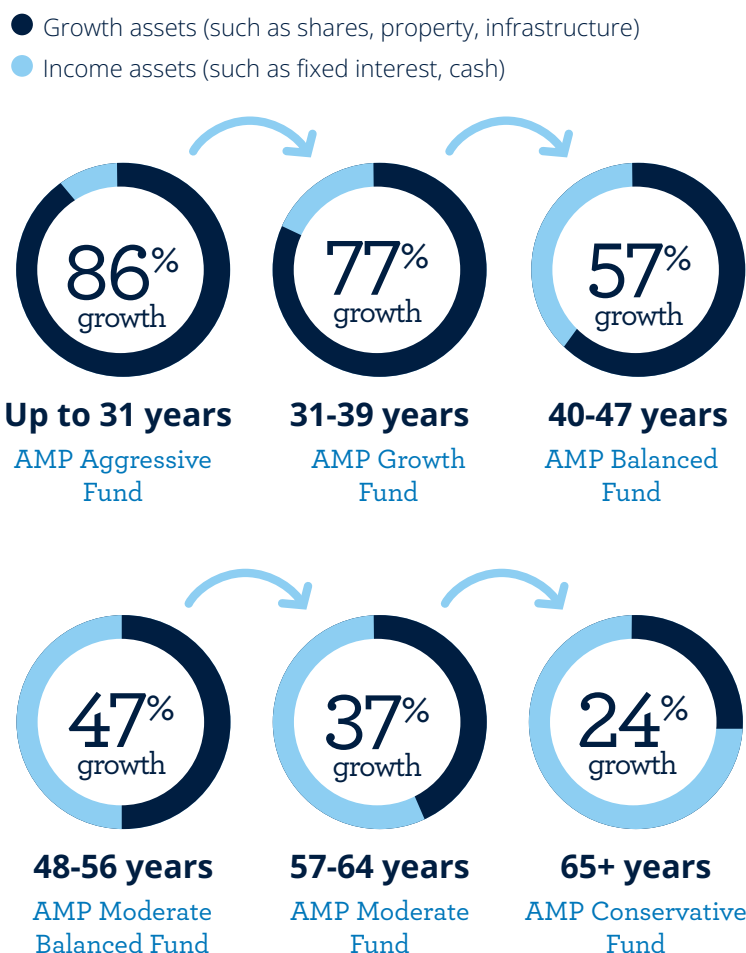
The AMP KiwiSaver Scheme has the Lifesteps Investment Programme.

Lifesteps reduces the need for your employees to reassess their choice of fund by automatically moving their savings between funds with different investment mixes as they age*.

It's a great option, which gives your employees the peace of mind that their savings are invested in the most appropriate fund for a typical investor of their age.

More information on Lifesteps can be found at amp.co.nz/lifesteps

The graph below shows the benchmark growth assets percentage reducing as a member gets older.



What about other investment options?

With the AMP KiwiSaver Scheme, your people can choose from a range of options including funds from other fund managers.

From time to time the age ranges applying to funds comprised in the Lifesteps Investment Programme may be adjusted and funds specific to particular age bands may be added or deleted. Asset allocation benchmarks, ranges and performance objectives for each fund may change from time to time.

None of AMP Wealth Management New Zealand Limited, The New Zealand Guardian Trust Company Limited or any other person guarantees the AMP KiwiSaver Scheme, the investments made or any returns on the investment. Past investment performance is not indicative of future investment performance. Returns will vary depending on the investment performance of the funds.

*This will be subject, in each case, to AMP having the ability to make that allocation, and having received sufficient information from Inland Revenue and/or the member. Please refer to the AMP KiwiSaver Scheme Product disclosure statement for more information.

How we can help

Comprehensive advice services

AMP offers complimentary access to a full spectrum of advice services from information to personalised advice, education and retirement planning. Our services are available both in person and digitally so you and your people can access the help they want, however they want.



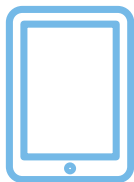
One-on-one advice, financial WOF and annual check-ins in-person and online



Financial education programmes & seminars in-person and online



Adviser digital chat sessions in-person and online, in peer groups, on hot topics



- Financial management tools
- MyAMP app and portal
- Projections and calculators



- Online & phone help
- NZ-based customer service team & call centre
- Website live chat



For members of the AMP KiwiSaver Scheme

- Digital and monthly updates
- Annual report
- MyAMP access

Phone 0800 267 5494
Email kiwisaver@amp.co.nz
Web amp.co.nz
Follow us on   

Want to know more?

AMP Wealth Management New Zealand Limited is the issuer and manager of the AMP KiwiSaver scheme. The Supervisor of the schemes is The New Zealand Guardian Trust Company Limited.

For more information about the AMP KiwiSaver Scheme, please see the scheme's current Product Disclosure Statement and Fund Update Booklet at amp.co.nz/kiwisaver or contact us on **0800 AMP KIWI** (0800 267 5494) or talk to your Adviser today.

© 2022 AMP Wealth Management New Zealand Limited. All rights reserved.