

Quarterly Disclosure Statement



for 1 April 2013 to 31 March 2014

AMP KiwiSaver Scheme - AMP Growth Fund

What is the purpose of this statement?

This statement provides key information about the AMP KiwiSaver Scheme AMP Growth Fund. It tells you how the fund has performed and what fees it charged, and will help you to compare it with other funds. We prepared this statement in accordance with the KiwiSaver (Periodic Disclosure) Regulations 2013. This information is not audited and may be updated.

Description of the fund

The fund has a well-diversified portfolio that aims to provide growth, primarily through holding growth assets diversified with a lower allocation to lower risk income assets. The fund aims to achieve medium to high returns - in exchange there will be larger movements up and down in the value of your investments.

Total value of the fund	\$355,470,654
Number of members in the fund	25,748
Date the fund started	1/10/2007

How has the fund performed?

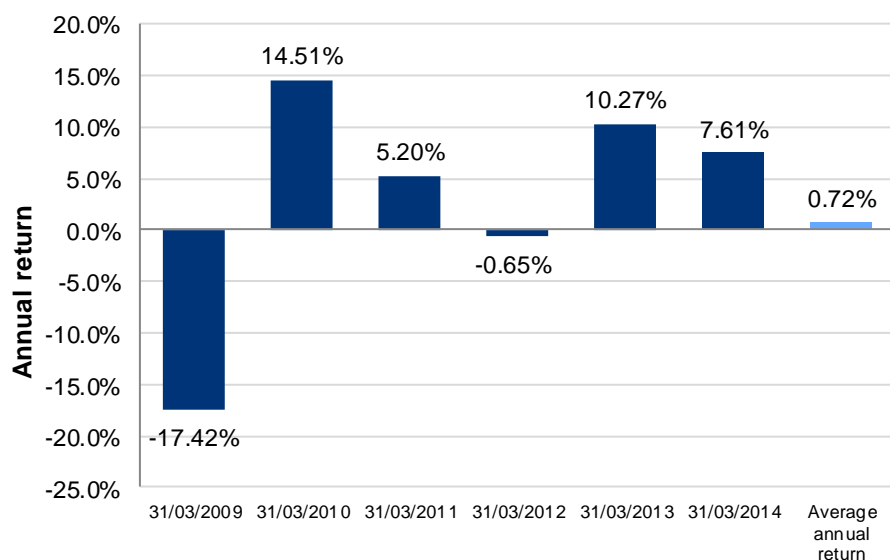
Past year

Annual return (after deductions for fund fees and tax¹)

7.61%

How has the fund performed in the past?

This shows the return after fund fees and tax for each tax year since the fund started and the average annual return since the fund started. It's important to note that this doesn't tell you how the fund will perform in the future.



What fees were members charged?

The returns above are after deductions for **fund fees**². These fees were last totalled up for the year to 31 March 2013 and were:

Total fund fees **1.08% of members' investments**

Which are made up of:

Annual management fee	1.00%
Performance-based fees	0.00%
Other fees and costs	0.08%

Members were also charged **membership fees**³ of **\$36.00** over the year to 31 March 2013.

Members may also be charged fees for specific actions or decisions (e.g. switching funds). See www.amp.co.nz/amponlinenz/ksinvestmentstatement for more information about these fees.

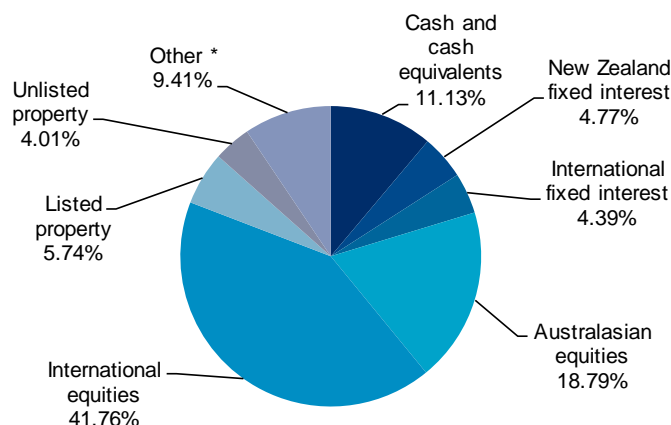
Example of how this applies to a member

Colin had \$10,000 in the fund at the start of the year and didn't make any further contributions. At the end of the year, Colin received a return after fund fees and tax were deducted of \$761 (that's 7.61% of his initial \$10,000). Colin also paid \$36.00 in membership fees³. This gives Colin a total return of \$725 for the year.

What does the fund invest in?

Actual investment mix

This shows the types of assets that the fund invests in.



* "Other" consists of Global Infrastructure (4.40%) and Commodities (5.01%)

Target investment mix

This shows the mix of assets that the fund generally intends to invest in.

Cash and cash equivalents	6.00%
New Zealand fixed interest	7.00%
International fixed interest	7.00%
Australasian equities	19.00%
International equities	42.00%
Listed property	5.00%
Unlisted property	5.00%
Other **	9.00%

** "Other" consists of Global Infrastructure (4.00%) and Commodities (5.00%)

Top 10 investments

	Name	Percentage of fund net assets	Type	Country	Credit rating (if applicable)
1	Orbis Global Equity Fund	2.01%	Funds	Australia	n/a
2	Botany Town Centre - Auckland	1.11%	Unlisted property	New Zealand	n/a
3	Fletcher Building Ltd	1.09%	Australasian equities	New Zealand	n/a
4	New Zealand Government Bond 5.50% due 15/04/2023	0.98%	New Zealand fixed interest	New Zealand	AA+
5	BHP Billiton Ltd	0.90%	Australasian equities	Australia	n/a
6	Telecom Corp of New Zealand Ltd	0.89%	Australasian equities	New Zealand	n/a
7	Vanguard FTSE Emerging Markets	0.80%	International equities	United States	n/a
8	Commonwealth Bank of Australia	0.73%	Australasian equities	Australia	n/a
9	Westpac Banking Corp	0.69%	Australasian equities	Australia	n/a
10	New Zealand Government Bond 6.00% due 15/05/2021	0.69%	New Zealand fixed interest	New Zealand	AA+

The top 10 investments make up 9.89% of the fund.

Key personnel

This shows the directors and employees who have the most influence on the investment decisions of the fund⁴.

Name	Current position	Time in current position	Previous or other position	Time in previous or other position
Gregory Paul Bird	Investment Committee Member	2 years, 0 months	Chief Actuary, AMP Financial Services (current)	0 years, 9 months
Anthony George Regan	Investment Committee Member, Chairperson	6 years, 6 months	Managing Director, AMP Financial Services (current)	6 years, 6 months
Jeffery Darren Ruscoe	Investment Committee Member	0 years, 5 months	Chief Customer Officer, AMP Financial Services (current)	0 years, 9 months
Peter Raymond Verhaart	Investment Committee Member	2 years, 9 months	Head of NZ Multi Asset Group, AMP Capital (current)	2 years, 7 months
Blair Robert Vernon	Investment Committee Member	2 years, 9 months	Director of Advice & Sales, AMP Financial Services (current)	0 years, 9 months

Further information:

Information about conflicts of interest

There have not been changes to the nature, or increases in the scale of, the fund's related-party transactions compared with the last quarter. See the AMP KiwiSaver Scheme annual financial statements for more information about the scheme's related-party transactions.

Changes to trade allocation, execution and proxy voting policies

No trade allocation, execution or proxy voting policies were applied to the fund.

Changes to valuation methods

There have not been changes to the fund's valuation methods in the past three months.

Electronic disclosure of this information

Most of the information contained in this statement, including some additional information, is available in a spreadsheet at www.amp.co.nz/ampgfgdsdatafile310314.

For a copy of the AMP KiwiSaver Scheme Investment Statement, please visit www.amp.co.nz/amponlinenz/ksinvestmentstatement or call 0800 267 5494.

Notes

¹Returns in this statement are after tax at the highest prescribed investor rate (PIR) of tax for an individual New Zealand resident. Your tax rate may be lower.

²Fund fees are fees charged as a percentage of a member's interest in the fund (i.e. as a percentage of their KiwiSaver account balance).

³Membership fees are the fixed dollar charges for membership in the KiwiSaver scheme. The membership fee was reduced from \$3.00 per member per month (\$36.00 annually) to \$2.95 per member per month (\$35.40 annually) on 4 June 2013. A lower membership fee may apply to a member if their employer has established an employer plan within the AMP KiwiSaver Scheme.

⁴These individuals are members of the AMP Financial Services Investment Committee. The other members are Fiona Ann Oliver (General Manager, Wealth Management), Bevan Trevor Graham (Chief Economist, AMP Capital), Nicholas Paul Edward Scarlett (General Manager, Proprietary Distribution), and Christopher James White (Managing Director, Spicers). This Committee makes investment decisions in relation to the fund on behalf of the manager. Members do not participate in any decisions where a conflict of interest arises. Peter Raymond Verhaart and Bevan Trevor Graham are not directors or employees of the manager.

Manager's Certificate

The Manager of the AMP KiwiSaver Scheme, AMP Services (NZ) Limited, certifies that –

- (a) the disclosure statement has been prepared for the purposes of the KiwiSaver (Periodic Disclosure) Regulations 2013 (Regulations); and
- (b) to the best of the Manager's knowledge after making reasonable inquiry, all information required by the Regulations has been disclosed in accordance with the Regulations and the information presented is accurate; and
- (c) the disclosure statement does not contain any matter that is likely to deceive or mislead with regard to any particular that would be material to an offer of an interest in the AMP KiwiSaver Scheme.



Kevin Bouchier
Authorised Signatory
On behalf of the Manager
AMP Services (NZ) Limited

22 April 2014